



LIVE YOUR DREAM



Up to \$100,000



WHEN EVALUATING AN OPPORTUNITY

- **Choose the right business partners -**
 - Right company, management and TEAM
- **Be in front of explosive growth -**
 - 55 year old start up
- **Products that address a need -**
 - Billion dollar markets

ABOUT US

OVERVIEW

LEGACY

VALUES

INCOME OPPORTUNITY

LEADERSHIP

[Roger Barnett, CEO](#) >

[Management Team](#)

[Takashi Bamba](#)

[Marjorie Fine](#)

ROGER BARNETT, CHAIRMAN AND CEO

Mr. Barnett is the Chairman and CEO of Shaklee Corporation, one of the leading providers of premium-quality, natural, nutrition, personal care, and household products. Founded in 1956, Shaklee is the number one natural nutrition company in the U.S., with more than 1.2 million members and distributors in the U.S., Japan, Mexico, Malaysia, Canada, Taiwan and China.

Mr. Barnett began his career at the investment banking firm Lazard Freres & Co. He then organized an investment group to acquire control of Arcade, Inc., a fragrance sampling company, and became its President and Chief Executive Officer. During his six-year tenure, Arcade was transformed into the largest sampling company in the world, expanding from a solely U.S. operation into a global business.

Under Mr. Barnett's leadership, the number of products multiplied tenfold and entered new industries that significantly increased the total size of the company's served market. He was also the founder and Chairman and CEO of Beauty.com, which continues to be one of the leading internet retailers in the cosmetics industry. In addition, Mr. Barnett has served as the Managing Partner of Activated Holdings LLC, an investment vehicle for a private family holding company, controlling more than \$2 billion in assets.



Roger Barnett
Chairman and CEO, Shaklee Corporation

- Top Notch Management Team Corporate Team
- Unsurpassed Upline Support



"SHAKLEE-IZE" YOUR HOME



Healthy Nutrition

Healthy Home



Healthy Weight

Healthy Beauty



 *Shaklee*

LIVE THE SHAKLEE LIFESTYLE



Step 1: Join the Shaklee Family

An \$850 +
Retail
Value
for \$599

- A product valued at up to \$100 retail at no additional cost when you sign up for a 100 PV order on AutoShip
- A Distributor Welcome Kit
- A 15% discount (off SRP) on all product purchases
- Access to MyShaklee.com for news, training, and sales tools
- A Shaklee Personal Web Site—the face of your business online—for six months at no additional cost
- A selection of products to Shaklee-ize your home

What makes the GOLD PLUS PAK unique?

- A Shaklee Personal Web site for six months at no additional cost
- 500 PV
- 18 best-selling Shaklee products

KEY: 500PV



Shaklee Vitalizer™ of your choice (1 box, 30 Vita-Strips®) • Vivix® (1 bottle, 30 servings) • NutriFeron® (60 count) • Cinch® Vanilla Shake Mix Canister (15 servings) • Cinch® Chocolate Shake Mix Packets (1 box, 14 packets) • Cinch® Snack Bar Assortment Pack (10 bars) • Cinch® Energy Tea Mix Unsweetened (28 sticks) • Basic H2® 16 fl. oz. • Hydrating Cleansing Lotion 6 fl. oz. • Hydrating Moisturizer 1.7 oz. • C+E Repair P.M.® 1 oz. • Get Clean® Spray Bottles (2 bottles) • Get Clean® Hand Dish Wash 16 fl. oz. • Get Clean® Dish Washer Automatic Powder Concentrate 2 lb. • Get Clean® Fresh Laundry Concentrate 32 fl. oz. • Get Clean® Nature Bright® Laundry Booster and Stain Remover 2 lb. • Get Clean® Soft Fabric Dryer Sheets (80 sheets) • Get Clean® Germ Off Disinfecting Wipes (35 wipes)

Other Ways to Join

MEMBER for \$19.95



— OR —

Join as a Member FREE with the purchase of Shaklee Vitalizer™ of your choice



- 15% discount (off retail) on all Shaklee products
- Member Welcome Pack
- \$25 product credits via the Member Referral program. (See MyShaklee.com)

DISTRIBUTOR for \$39.95



- The potential to start a Shaklee business and earn bonus income
- 15% discount (off retail) on all Shaklee products
- A Distributor Welcome Pack

For those wanting to take *full advantage* all the ways to earn in Shaklee

GOLD Ambassador with a GOLD PAK, \$299

- **Five** best selling Shaklee products
- A Personal Website for three (3) months at no additional cost
- **250 PV**



A \$500 +
Retail
Value
for \$299

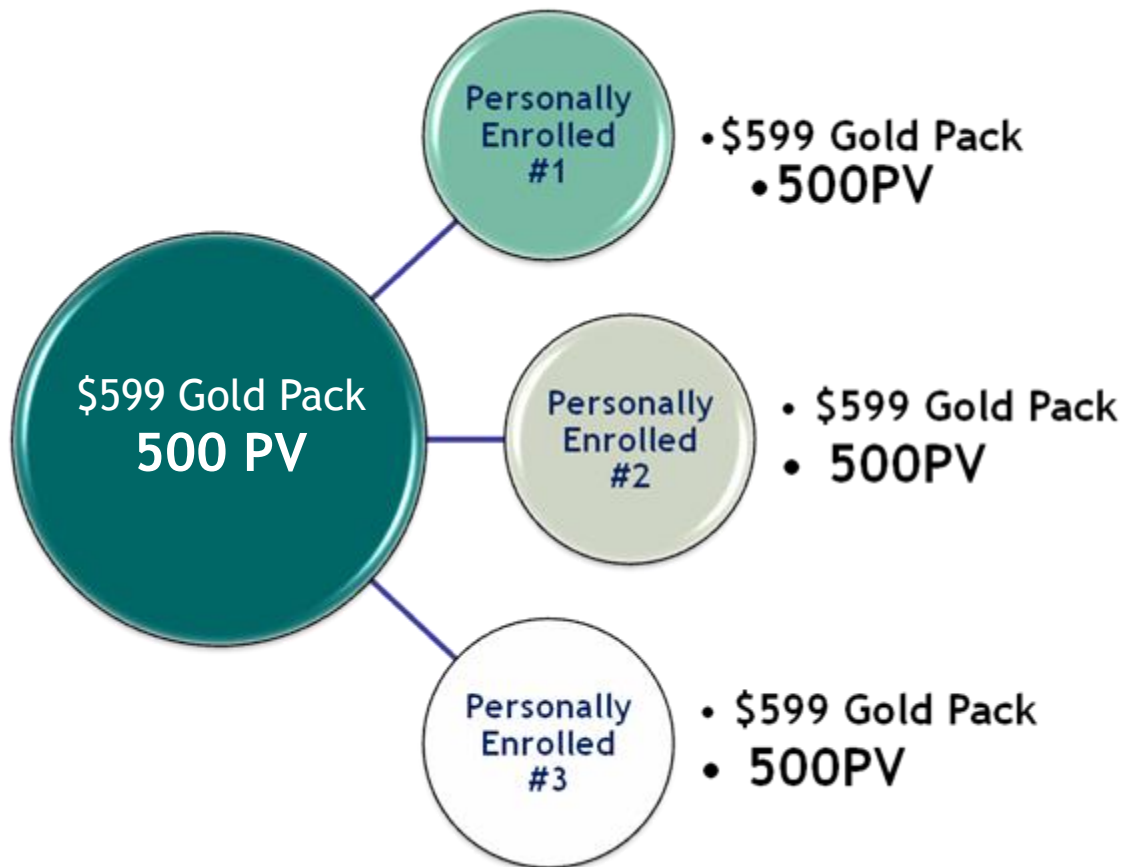
GOLD Ambassador with a Super GOLD PAK, \$750

- **37** products and 12 accessories in four packs—the GOLD PAK, Cinch Starter Kit, Get Clean Starter Kit, Enfuselle Nutrition Therapy Skin Care System
- A Personal Website for six (6) months at no additional cost
- **500 PV**



A \$1,250 +
Retail
Value
for \$750

Step 2: Earn Your Money Back



\$300 Commissions
\$300 Power Bonuses
\$600

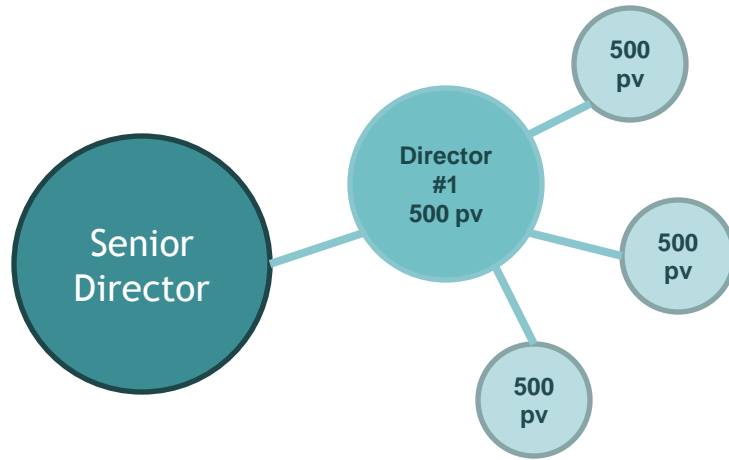
+\$280 residual

\$880 Total

2000 PV in one month

Director

Step 3: Become a Senior Director



Requirements:

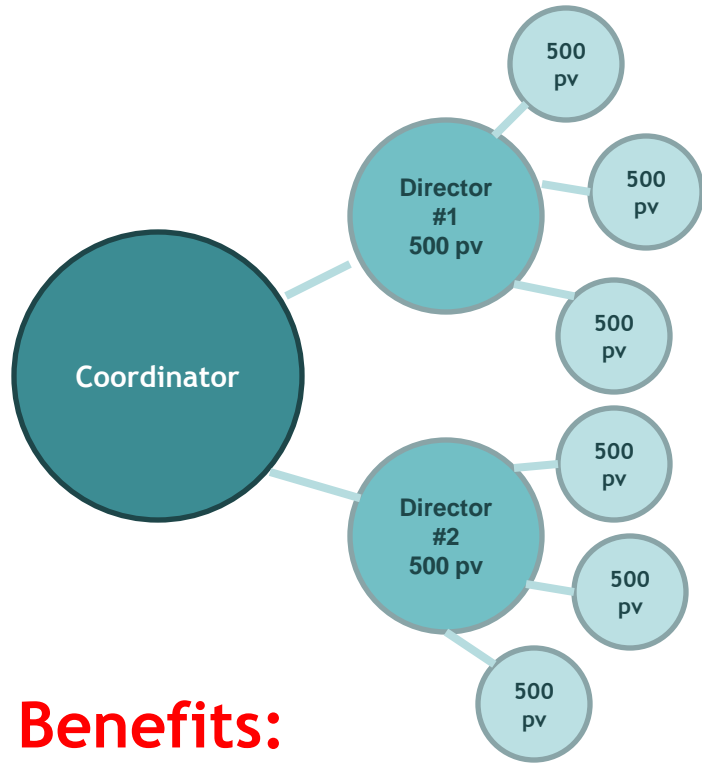
1. Develop 1 Director
2. 100 personal volume
3. 2000 PV personal group
(Increase to 3000 PGV for car bonus and New Director's Conference)

Benefits:

1. \$1,000 FastTRACK* Bonus
2. DREAM PLAN Earnings
 - Generation Bonuses
 - Monthly car allowance \$225 - \$250

*Achieve Sr. Director and maintain for 3 consecutive months including month of promotion

Step 4: Become a Coordinator



Requirements:

1. Develop 2 Directors
2. 100 personal volume
3. 2000 PV personal group

(Maintain 3000 PV for car bonus)

Benefits:

1. \$3,000 FastTRACK* Bonuses + Trip
2. DREAM PLAN Earnings
 - Generation Bonuses
 - Monthly car allowance \$225 - \$250

*Achieve Coordinator and maintain for 3 consecutive months including month of promotion



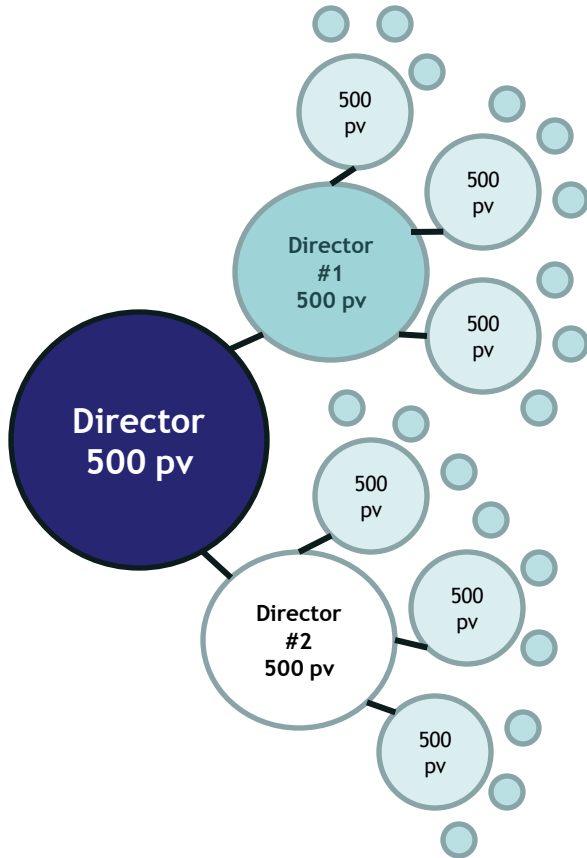


QUALIFY ON FastTRACK FOR 2



Barceló Maya Palace, Mayan Riviera
Points Needed to Qualify: 350
Trip Dates: Oct. 23-28, 2012
Qualification Period: July 1, 2011-June 30, 2012

Step 5: Become a Sr. Coordinator



Requirements:

1. Develop 2 Directors
2. 100 personal volume
3. 2000 PV personal group
(Increase to 3000 PV for car bonus)
4. 10,000 PV organization

Benefits:

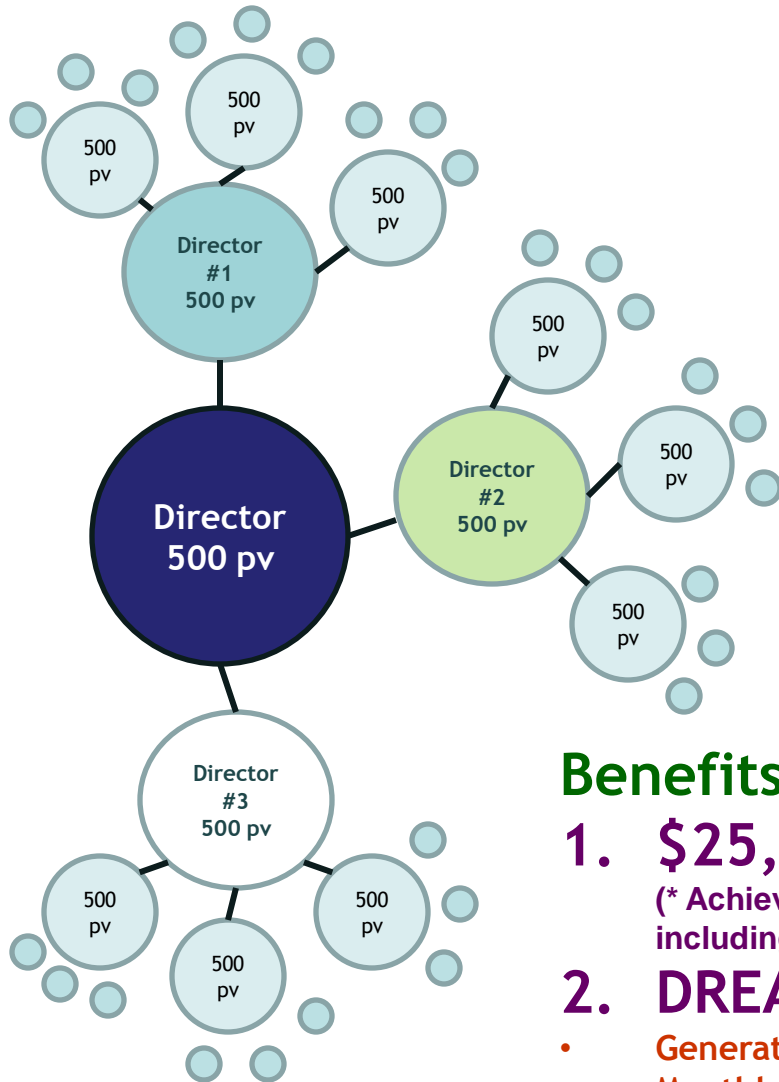
1. \$5,000 FastTRACK* Bonuses

(* Achieve Sr. Coordinator and maintain for 3 consecutive months including month of promotion. Bonus will be paid over 2 months)

2. DREAM PLAN Earnings

- Generation and Infinity Bonuses
- Monthly Car Allowance \$325 - \$375

Step 6: Become an Executive Coordinator



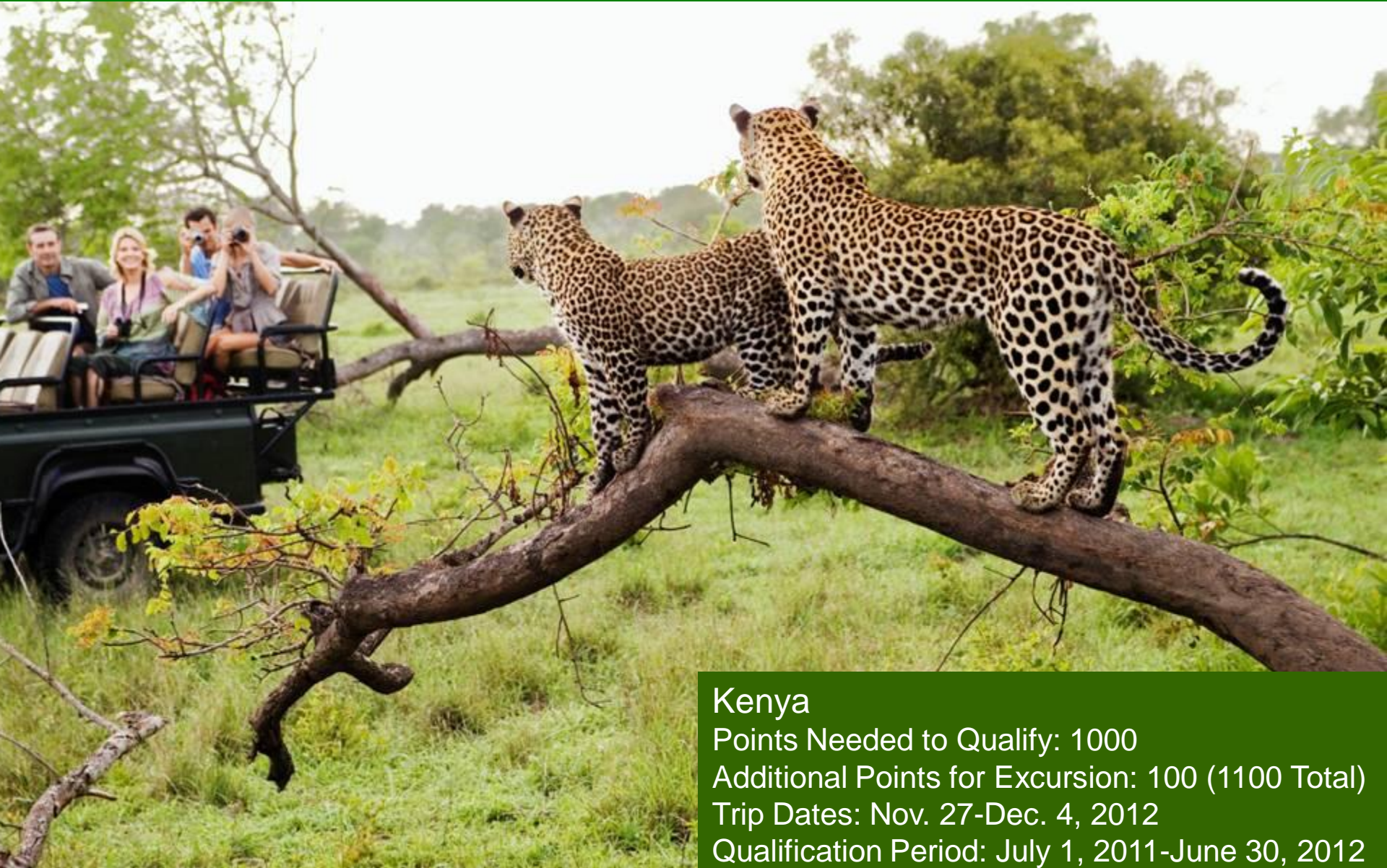
Requirements:

1. Develop 3 Directors
2. 100 personal volume
3. 2000 PV personal group
(Increase to 3000 PV for car bonus)
4. 20,000 PV organization

Benefits:

1. **\$25,000 FastTRACK* Bonuses + Trip**
(* Achieve Executive Coordinator and maintain for 6 consecutive months including month of promotion. Bonus will be paid over 4 months)
2. **DREAM PLAN Earnings**
 - Generation and Infinity Bonuses
 - Monthly Car Allowance \$325 - \$375

QUALIFY FOR TOP ACHIEVERS TRIP



Kenya


Points Needed to Qualify: 1000

Additional Points for Excursion: 100 (1100 Total)

Trip Dates: Nov. 27-Dec. 4, 2012

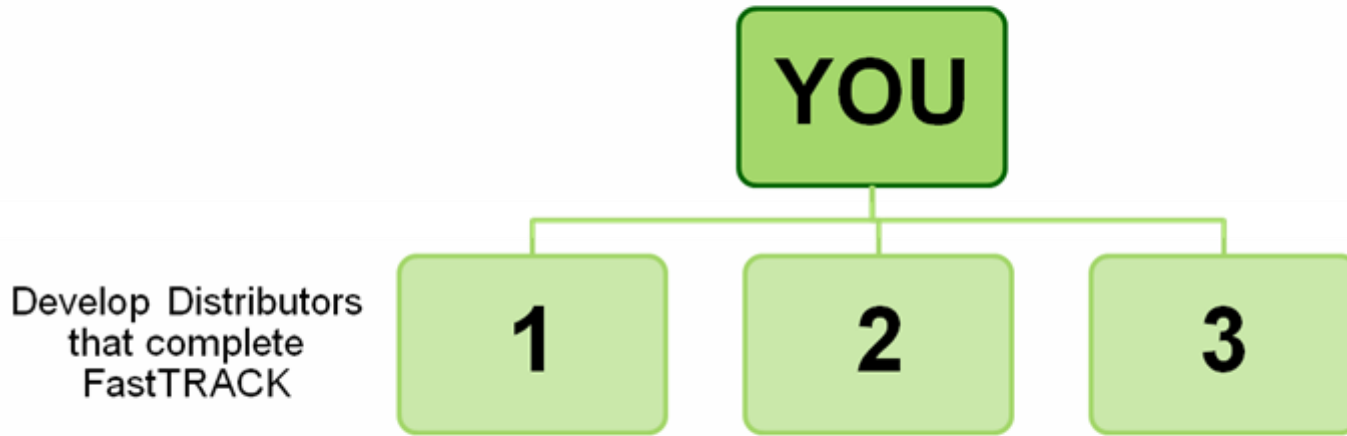
Qualification Period: July 1, 2011-June 30, 2012

Your Personal FastTRACK Bonuses

Requirement:	Position	Your Earnings
\$599 + tax + shipping	Distributor	\$ 850+ in products
2000 PV (could be 3 personal)	DIRECTOR	= \$ 880 (<u>Earn your money back</u>)
1 Director	SR DIRECTOR	= \$ 1,000
2 Directors	COORDINATOR	= \$ 3,000
2 Directors & 10,000PV	SR COORDINATOR*	= \$ 5,000
3 Directors & 20,000PV	EXECUTIVE COORDINATOR*	= \$ 25,000
		

* See the Shaklee Statement of Privileges & Responsibilities and the 2011-2012 Incentives Booklet for full requirements.

50% Matching Bonuses



$$\text{\$34,000} \times 50\% = \text{\$17,000}^*$$

$$\text{\$17,000} \times 3 = \text{\$51,000} + \text{\$34,000} = \text{\$85,000}$$

\\$85,000 FastTrack + over \\$5,000 in regular commissions and overrides = **\\$90,000+**

*Matching Bonuses from Sr. Coordinators and Executive Coordinators on FastTRACK will be paid over 2 months on Sr. Coordinators and 4 months on Executive Coordinators after the FastTRACK achiever's maintenance period is achieved. See rules for full details.

Qualify for \$90,000 in 90 Days



ANNUAL AVERAGE INCOME BY RANK



U.S.A | Real People Making Real Money



SHAKLEE STAIRWAY OF SUCCESS

Figures based on 2010 earnings*



*Average annual income for each rank is calculated monthly based on information reported on Form 1099-MISC for all U.S. Business Leaders who achieved the rank that month. The sum of these monthly averages is the figure reported above. Results will vary with effort. Shaklee Corporation does not guarantee that any particular income level will be achieved.



MEET SHAKLEE

We've paid over \$6 billion to people just like you, and we offer products that make a difference to people and the planet.

